

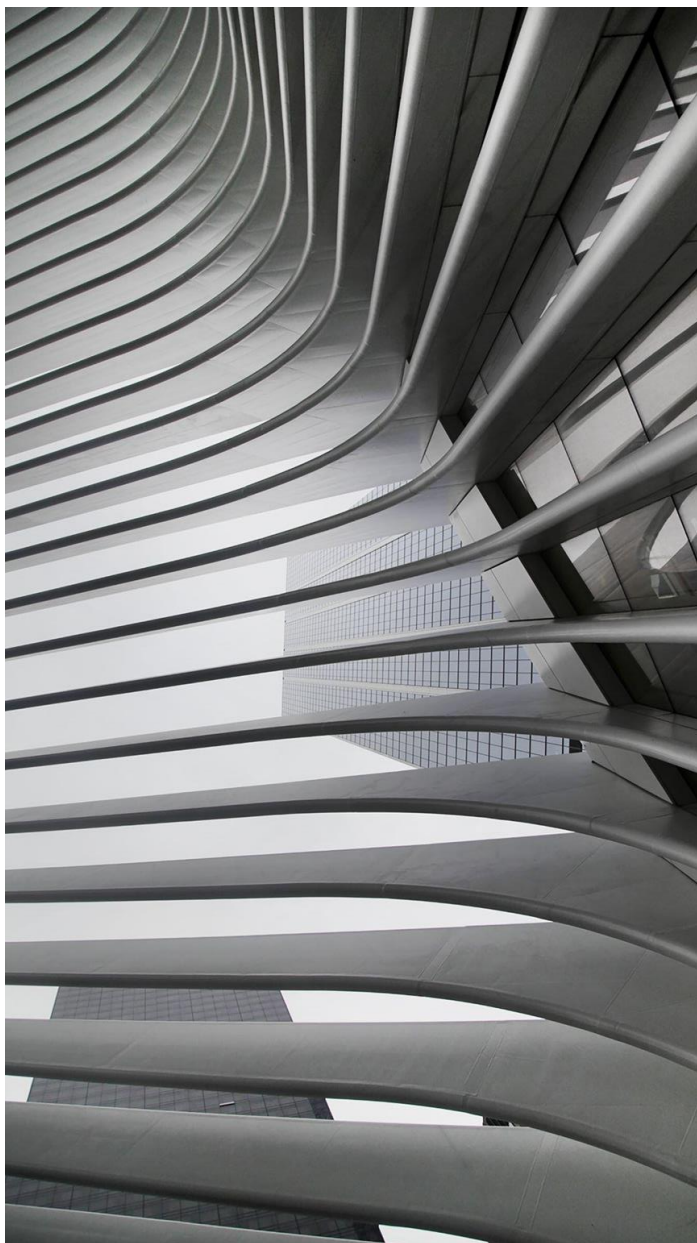


KABEN

A D V I S O R Y

January 2025



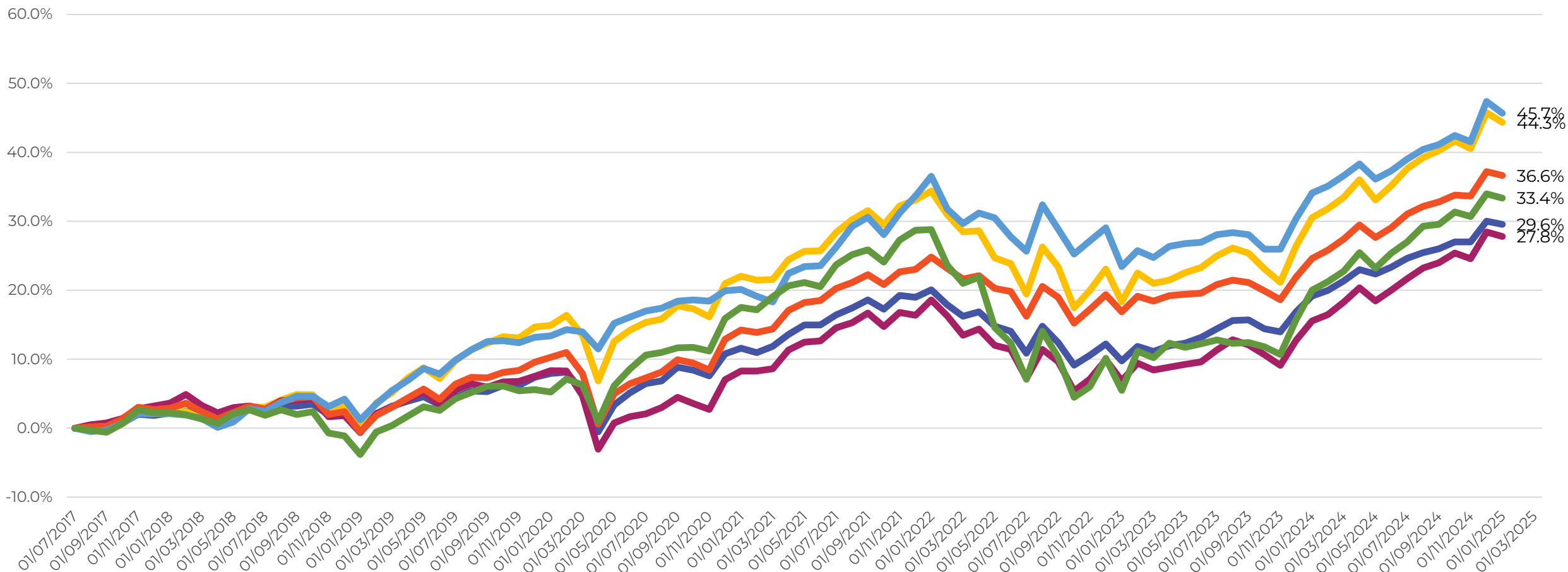


“Cautious” / Lower Risk Multi-Asset Fund Performance December 2024



“Cautious” Multi-Asset Fund Cumulative Performance

- Zurich Life Prisma 3
- Irish Life Multi Asset Portfolio 3
- New Ireland Goodbody Dividend Income 3 Gross
- Aviva Fixed 40
- New Ireland iFunds 3 Alpha Gross
- Aviva Cantor Fitzgerald Multi Asset 30 Fund Series C

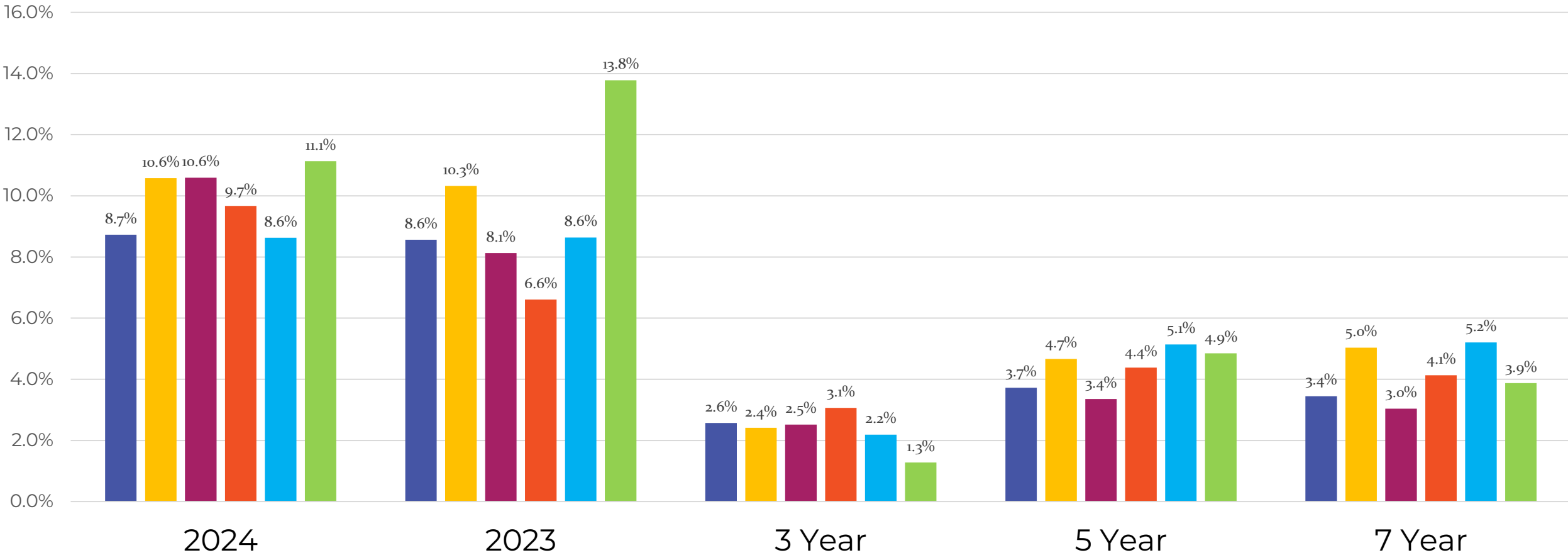


Source: Life-Office Monthly Prices . Performance is Gross of any fees. Performance from 1/7/17 – 1/1/25



“Cautious” Multi-Asset Fund Annualised Performance

- Zurich Life Prisma 3
 - Irish Life Multi Asset Portfolio 3
 - New Ireland Goodbody Dividend Income 3 Gross
- Aviva Fixed 40
 - New Ireland iFunds 3 Alpha Gross
 - Aviva Cantor Fitzgerald Multi Asset 30 Fund Series C

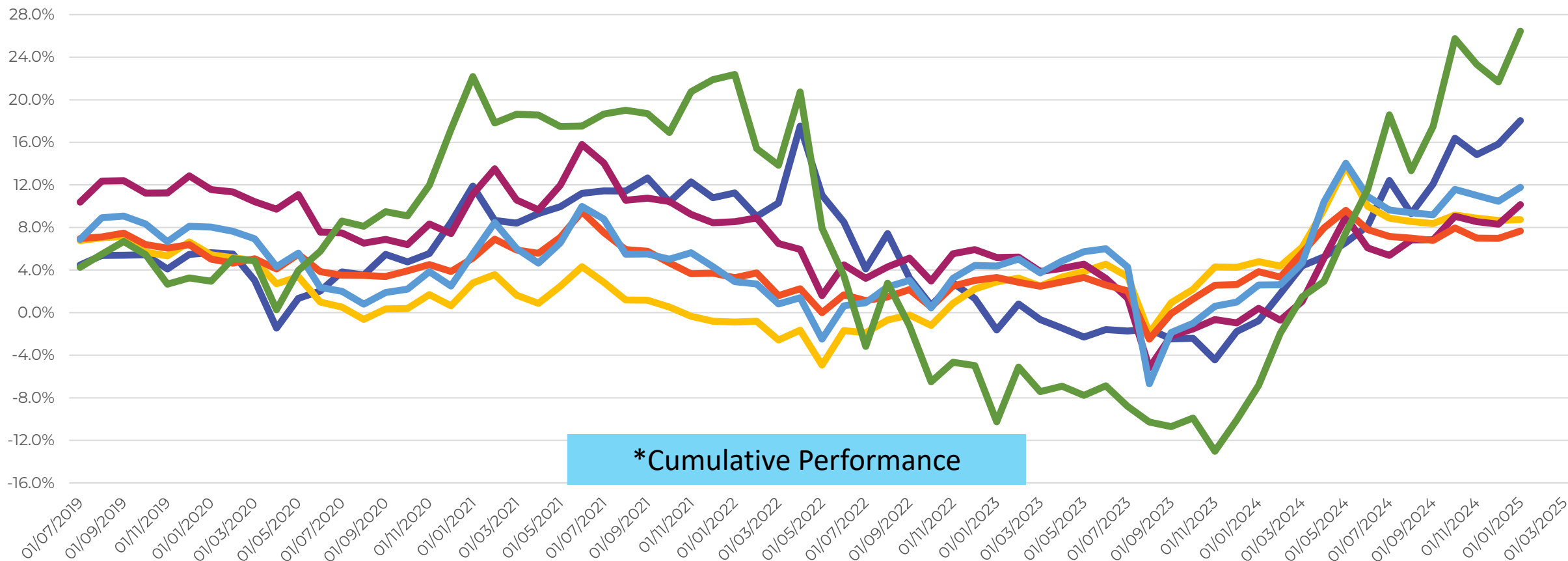


Source: Life-Office Monthly Prices . Performance is Gross of any fees. Performance from 1/7/17 – 1/1/25



“Cautious” Multi-Asset Fund Rolling 2-Year Performance*

- Zurich Life Prisma 3
- Irish Life Multi Asset Portfolio 3
- New Ireland Goodbody Dividend Income 3 Gross
- Aviva Fixed 40
- New Ireland iFunds 3 Alpha Gross
- Aviva Cantor Fitzgerald Multi Asset 30 Fund Series C

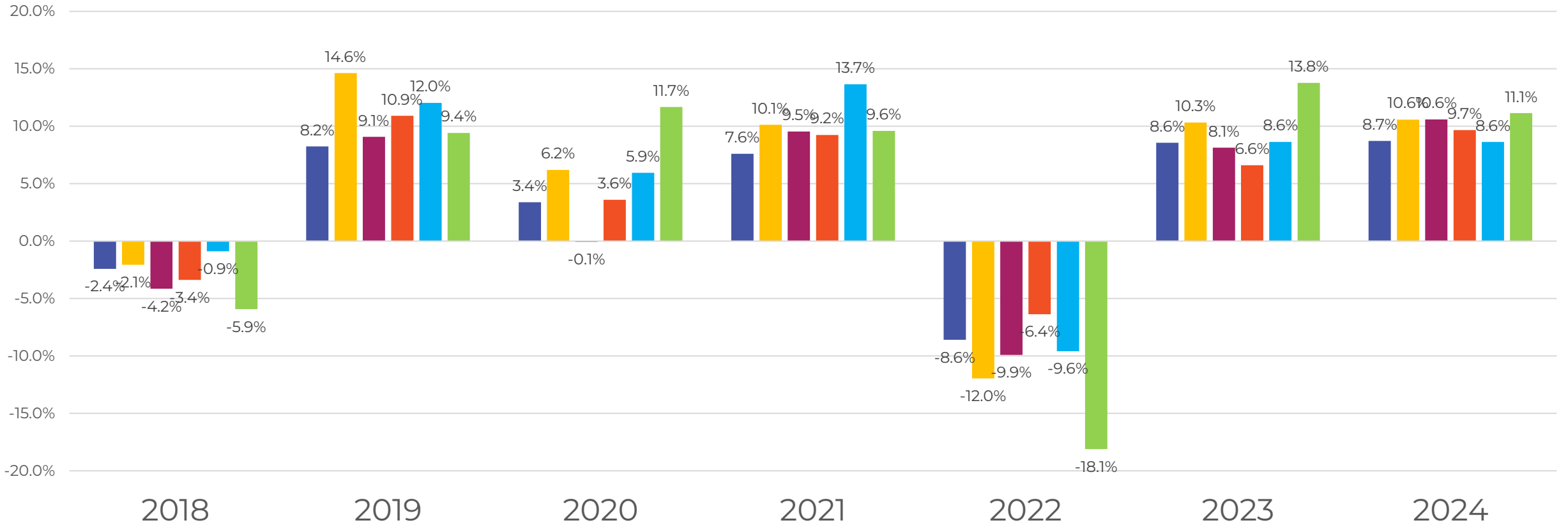


Source: Life-Office Monthly Prices . Performance is Gross of any fees. Performance from 1/7/17 – 1/1/25



“Cautious” Multi-Asset Fund Yearly Performance

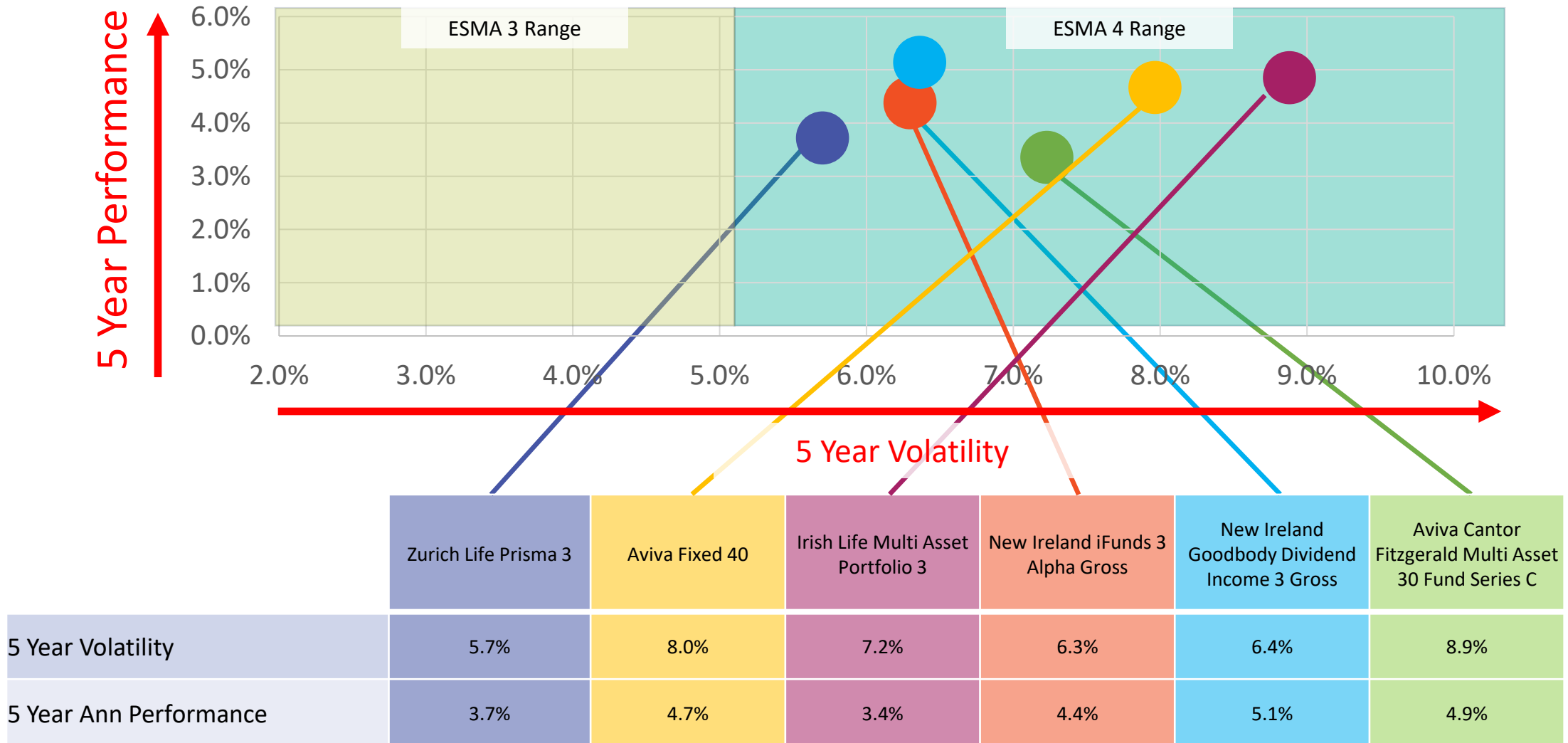
- Zurich Life Prisma 3
 - Irish Life Multi Asset Portfolio 3
 - New Ireland Goodbody Dividend Income 3 Gross
- Aviva Fixed 40
 - New Ireland iFunds 3 Alpha Gross
 - Aviva Cantor Fitzgerald Multi Asset 30 Fund Series C



Source: Life-Office Monthly Prices . Performance is Gross of any fees. Performance from 1/7/17 – 1/1/25

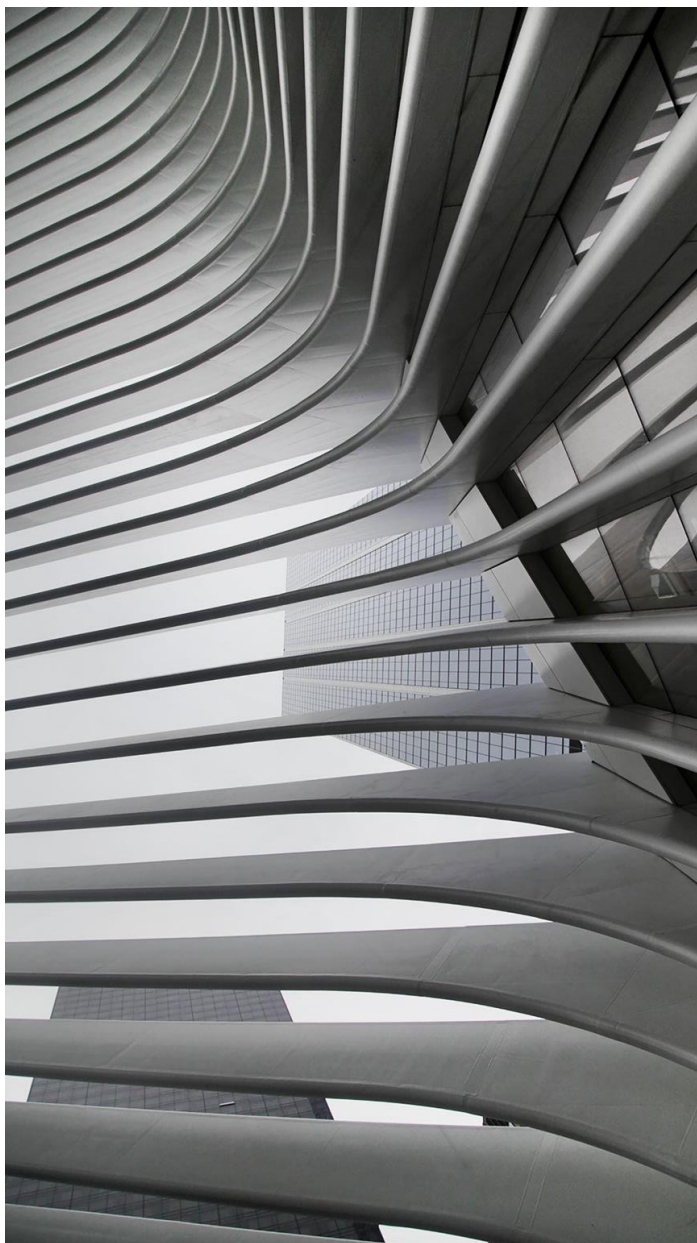


“Cautious” Funds - Volatility vs Return



Source: Life-Office Monthly Prices . Performance is Gross of any fees. Performance from 1/7/17 – 1/1/25



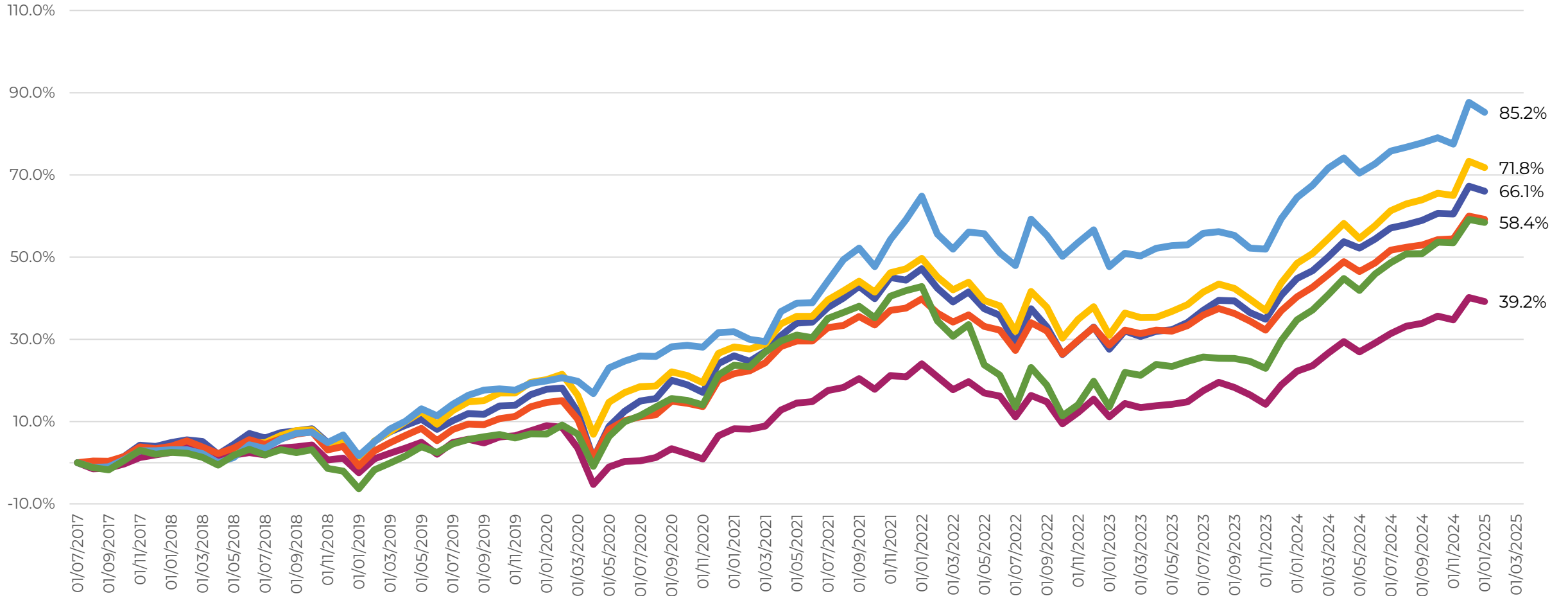


“Balanced” / Medium Risk Multi-Asset Fund Performance December 2024



“Balanced” Multi-Asset Fund Cumulative Performance

- Zurich Life Prisma 4
- Irish Life Multi Asset Portfolio 4
- New Ireland Goodbody Dividend Income 4 Gross
- Aviva Fixed 60
- New Ireland iFunds 4 Alpha Gross
- Aviva Cantor Fitzgerald Multi Asset 50 Fund Series C

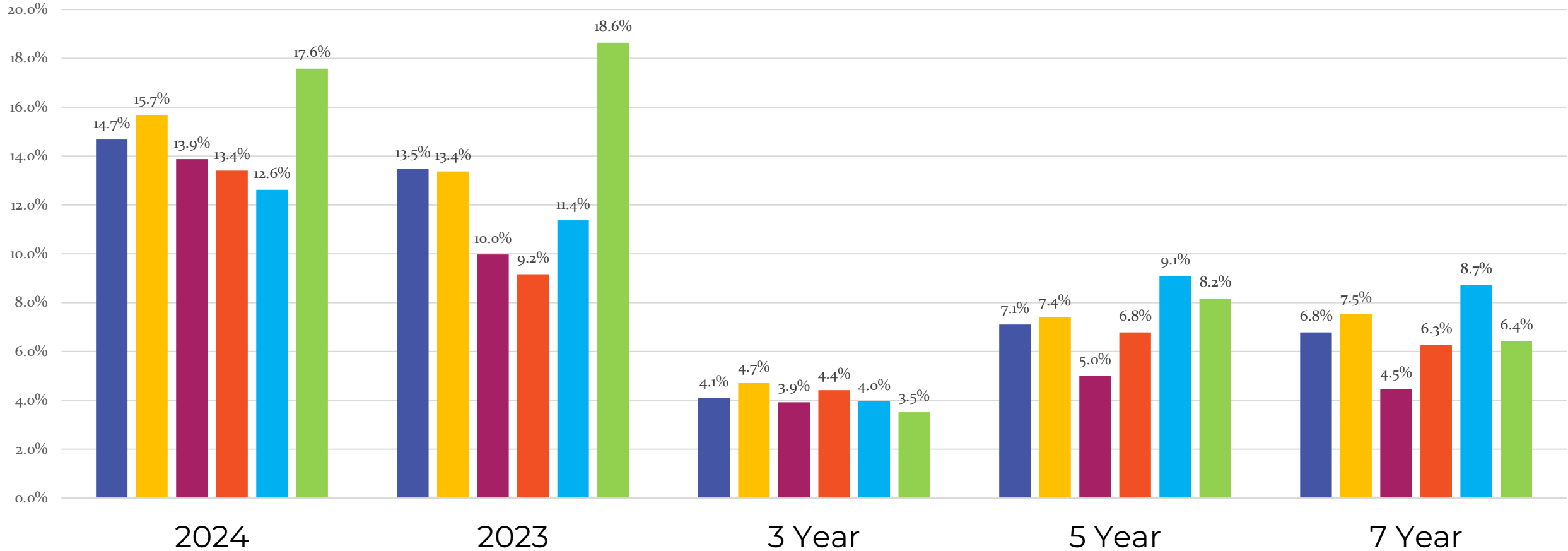


Source: Life-Office Monthly Prices . Performance is Gross of any fees. Performance from 1/7/17 – 1/1/25



“Balanced” Multi-Asset Fund Annualised Performance

- Zurich Life Prisma 4
- Irish Life Multi Asset Portfolio 4
- New Ireland Goodbody Dividend Income 4 Gross
- Aviva Fixed 60
- New Ireland iFunds 4 Alpha Gross
- Aviva Cantor Fitzgerald Multi Asset 50 Fund Series C

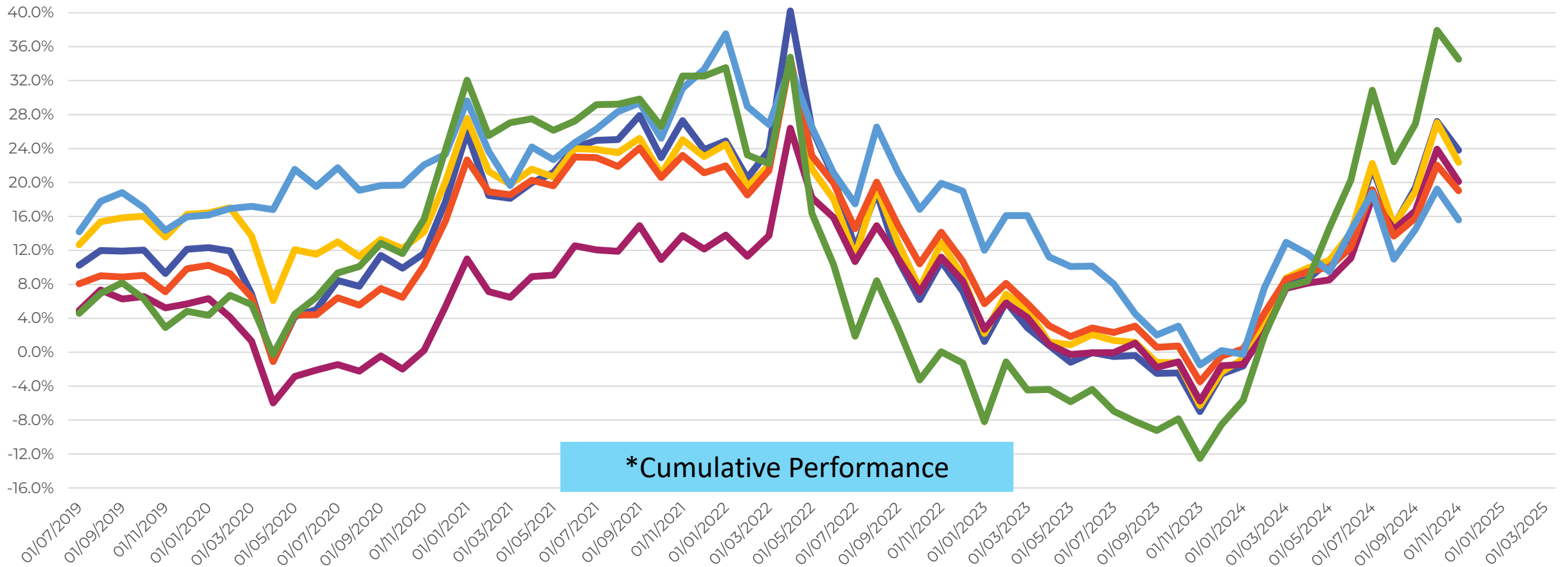


Source: Life-Office Monthly Prices . Performance is Gross of any fees. Performance from 1/7/17 – 1/1/25



“Balanced” Multi-Asset Fund 2-Year Rolling Performance*

- Zurich Life Prisma 4
- Irish Life Multi Asset Portfolio 4
- New Ireland Goodbody Dividend Income 4 Gross
- Aviva Fixed 60
- New Ireland iFunds 4 Alpha Gross
- Aviva Cantor Fitzgerald Multi Asset 50 Fund Series C

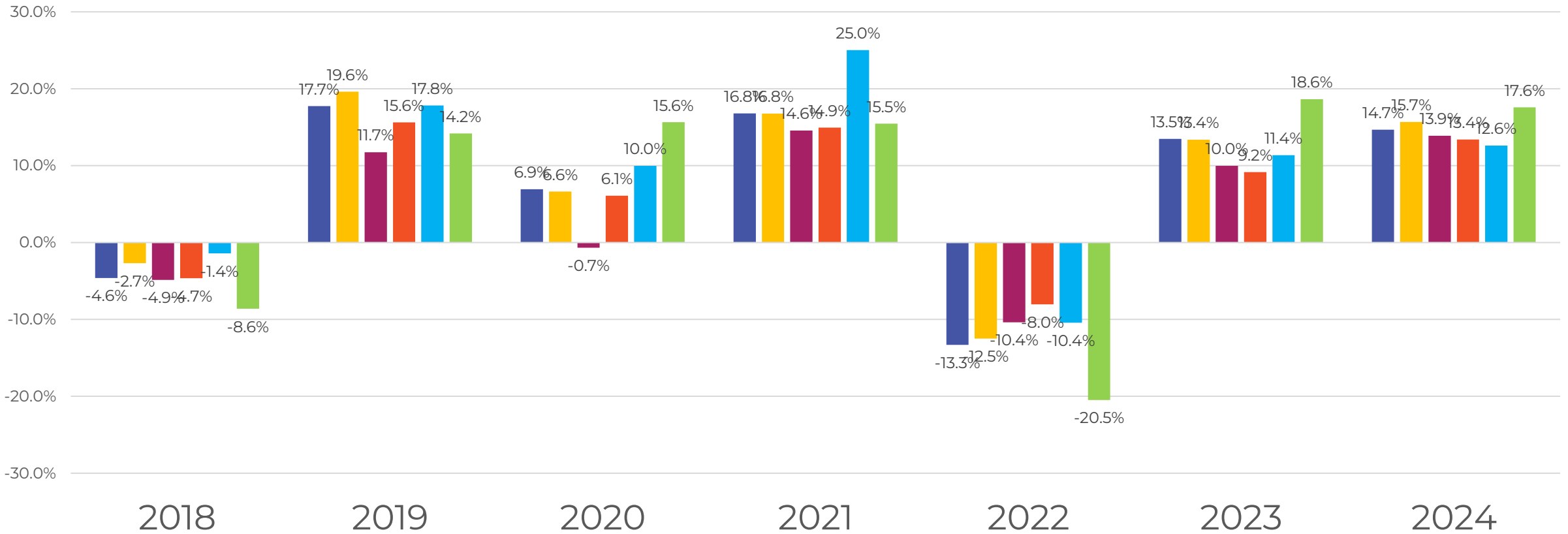


Source: Life-Office Monthly Prices . Performance is Gross of any fees. Performance from 1/7/17 – 1/1/25



“Balanced” Multi-Asset Fund Yearly Performance

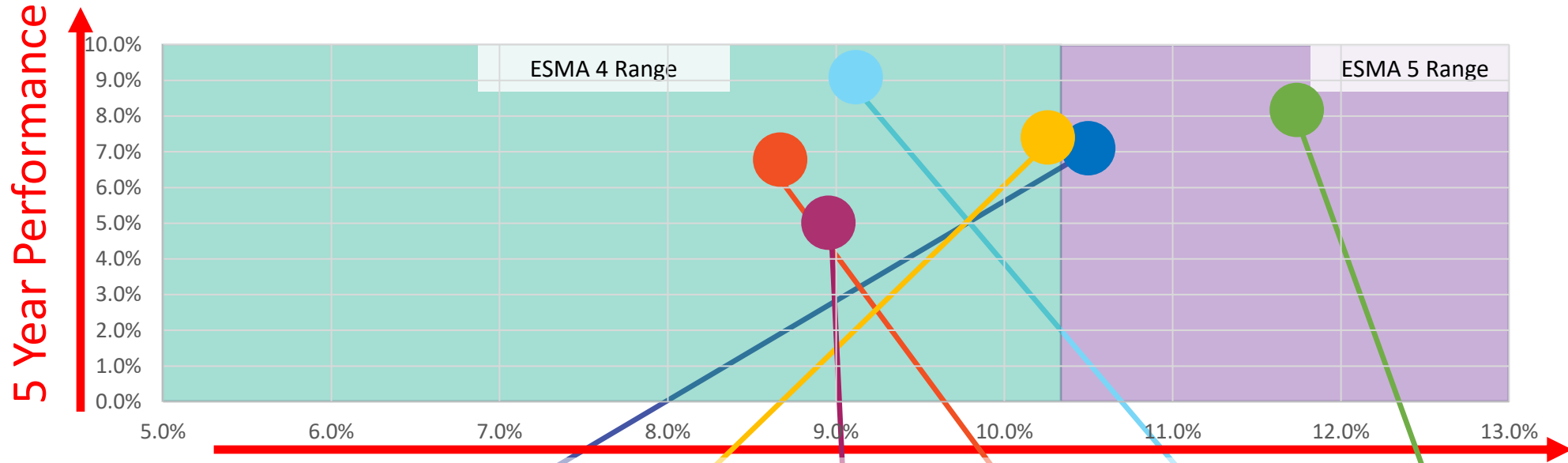
- Zurich Life Prisma 4
- Irish Life Multi Asset Portfolio 4
- New Ireland Goodbody Dividend Income 4 Gross
- Aviva Fixed 60
- New Ireland iFunds 4 Alpha Gross
- Aviva Cantor Fitzgerald Multi Asset 50 Fund Series C



Source: Life-Office Monthly Prices . Performance is Gross of any fees. Performance from 1/7/17 – 1/1/25



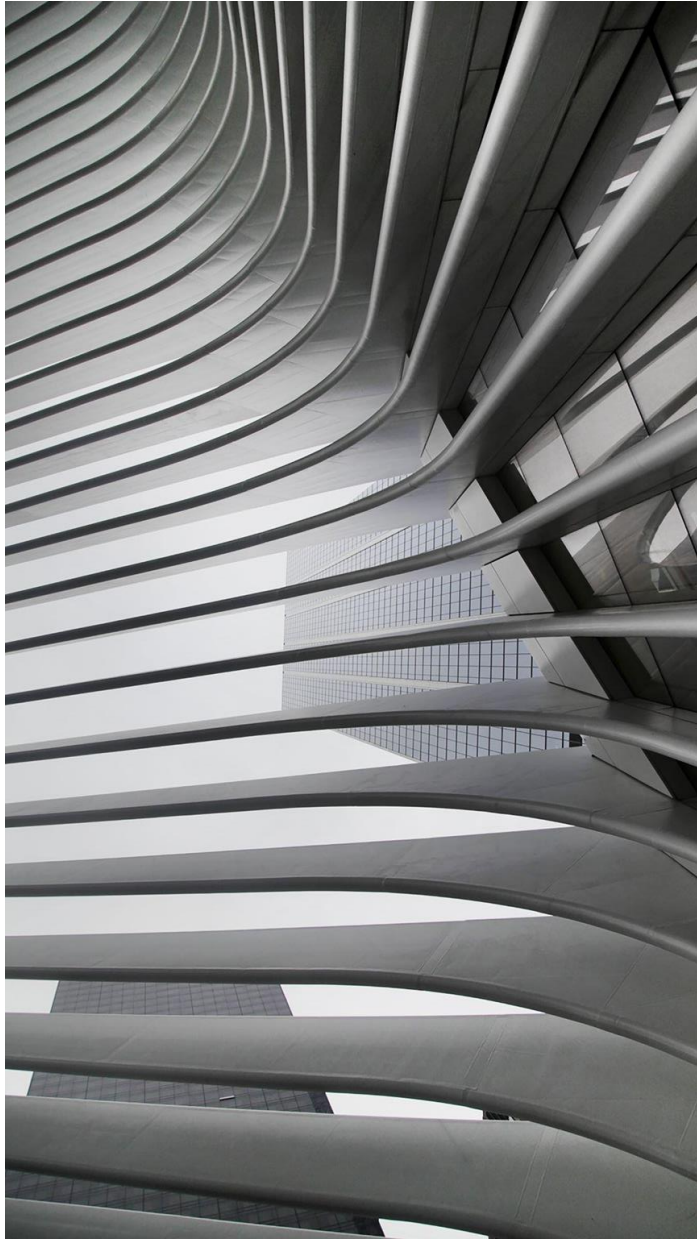
“Balanced” Funds - Volatility vs Return



	Zurich Life Prisma 4	Aviva Fixed 60	Irish Life Multi Asset Portfolio 4	New Ireland iFunds 4 Alpha Gross	New Ireland Goodbody Dividend Income 4 Gross	Aviva Cantor Fitzgerald Multi Asset 50 Fund Series C
5 Year Volatility	10.5%	10.3%	9.0%	8.7%	9.1%	11.7%
5 Year Ann Performance	7.1%	7.4%	5.0%	6.8%	9.1%	8.2%

Source: Life-Office Monthly Prices . Performance is Gross of any fees. Performance from 1/7/17 – 1/1/25



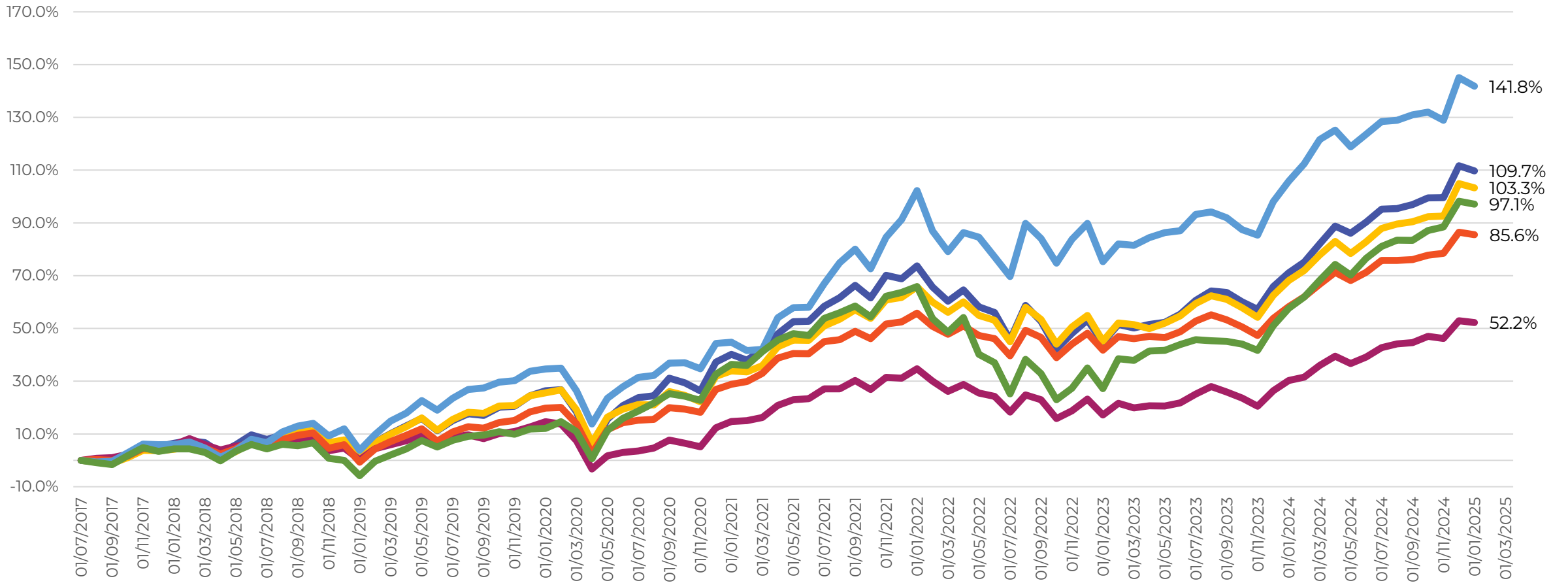


“Growth” / Higher Risk Multi-Asset Fund Performance December 2024



“Growth” Multi-Asset Fund Cumulative Performance

- Zurich Life Prisma 5
- Irish Life Multi Asset Portfolio 5
- New Ireland Goodbody Dividend Income 6 Gross
- Aviva Fixed 80
- New Ireland iFunds 5 Alpha Gross
- Aviva Cantor Fitzgerald Multi Asset 70 Fund Series C

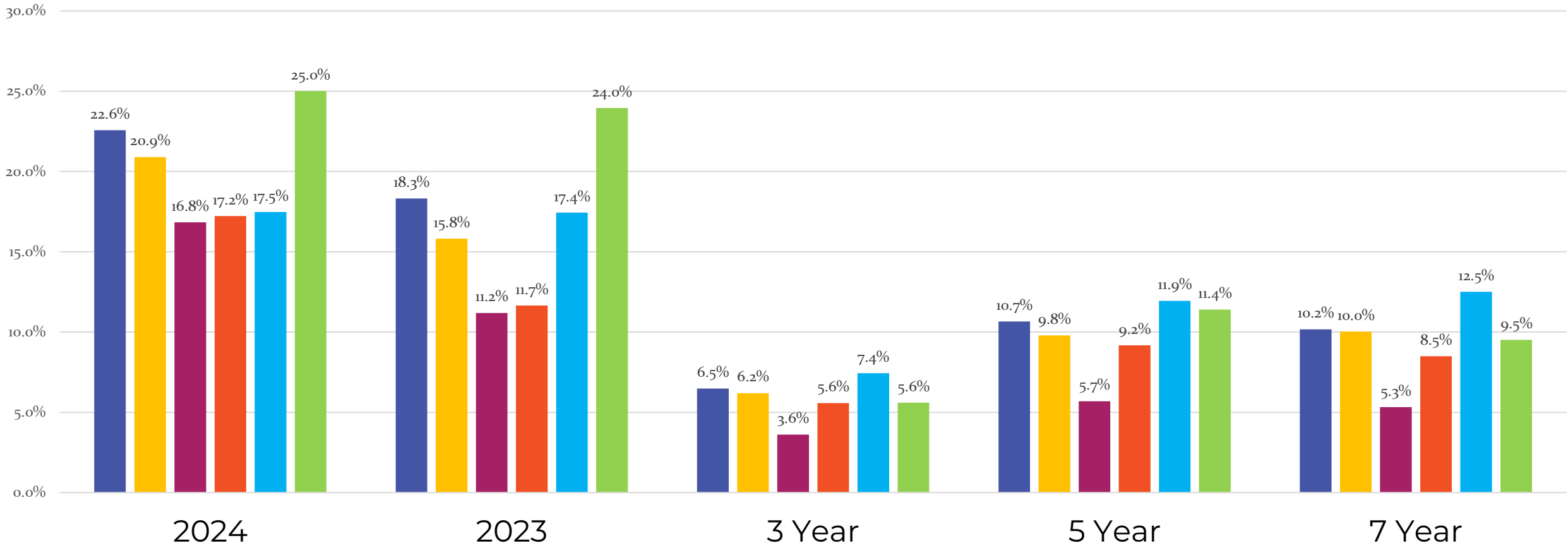


Source: Life-Office Monthly Prices . Performance is Gross of any fees. Performance from 1/7/17 – 1/1/25



“Growth” Multi-Asset Fund Annualised Performance

- Zurich Life Prisma 5
 - Irish Life Multi Asset Portfolio 5
 - New Ireland Goodbody Dividend Income 6 Gross
- Aviva Fixed 80
 - New Ireland iFunds 5 Alpha Gross
 - Aviva Cantor Fitzgerald Multi Asset 70 Fund Series C

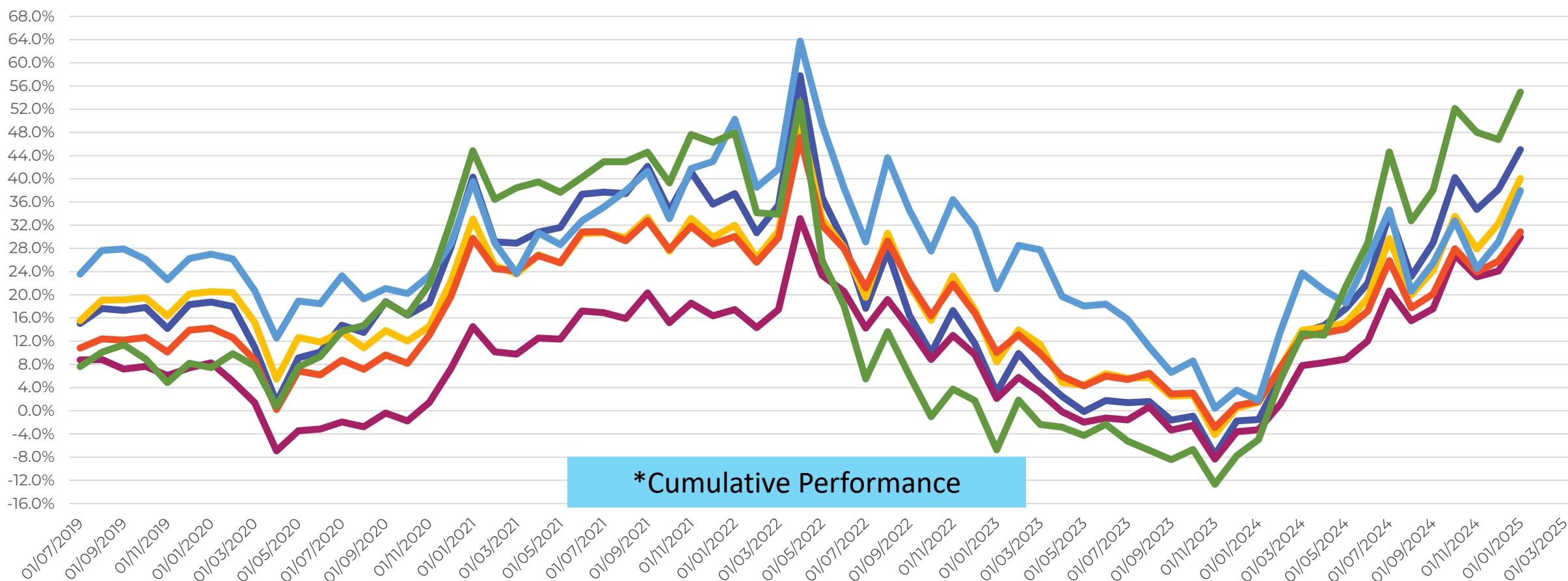


Source: Life-Office Monthly Prices . Performance is Gross of any fees. Performance from 1/7/17 – 1/1/25



“Growth” Multi-Asset Fund Rolling 2-Year Performance*

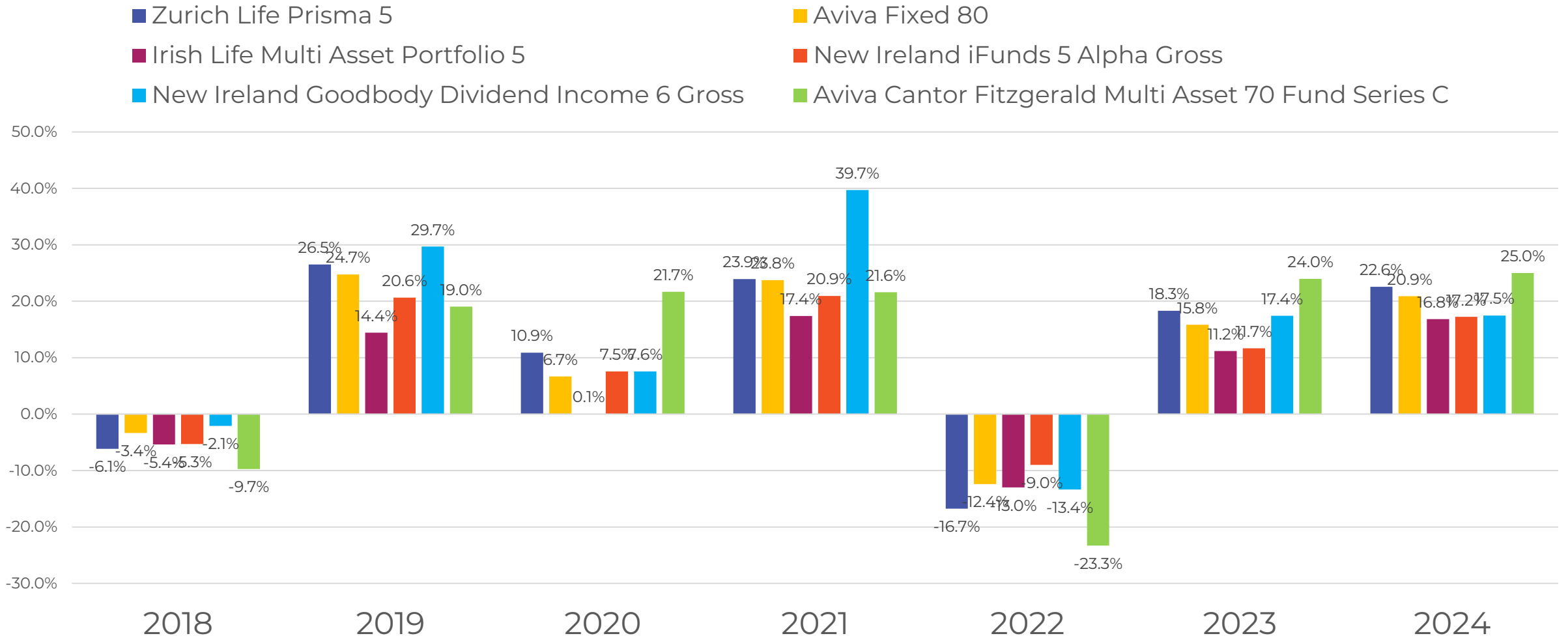
- Zurich Life Prisma 5
- Irish Life Multi Asset Portfolio 5
- New Ireland Goodbody Dividend Income 6 Gross
- Aviva Fixed 80
- New Ireland iFunds 5 Alpha Gross
- Aviva Cantor Fitzgerald Multi Asset 70 Fund Series C



Source: Life-Office Monthly Prices . Performance is Gross of any fees. Performance from 1/7/17 – 1/1/25



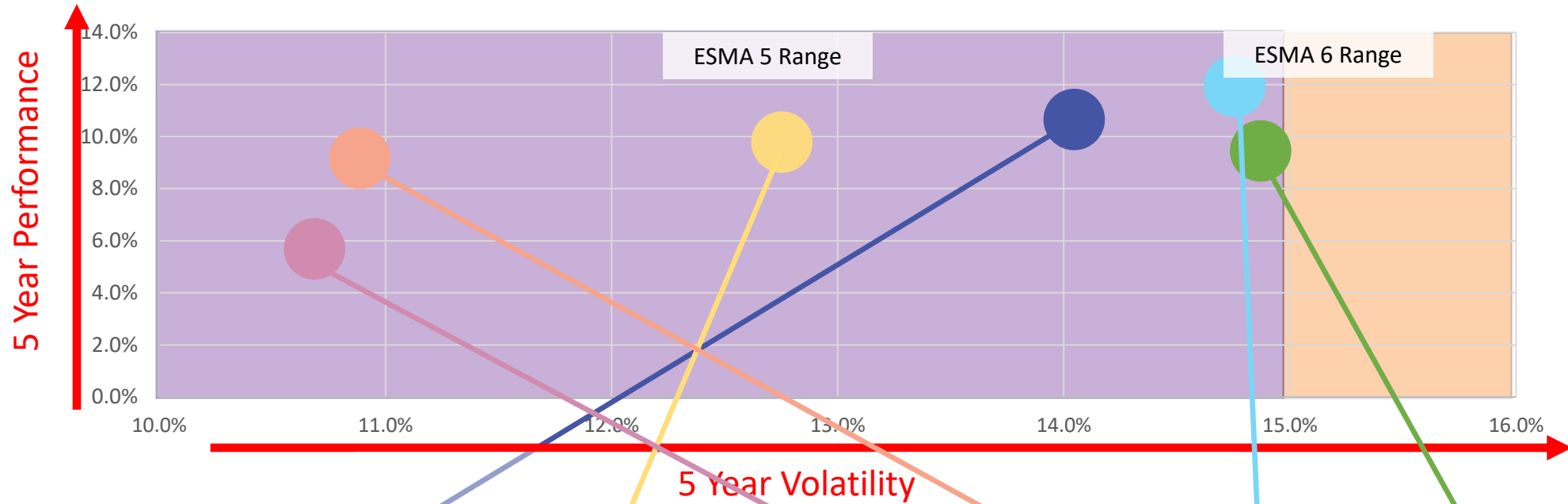
“Growth” Multi-Asset Fund Yearly Performance



Source: Life-Office Monthly Prices . Performance is Gross of any fees. Performance from 1/7/17 – 1/1/25

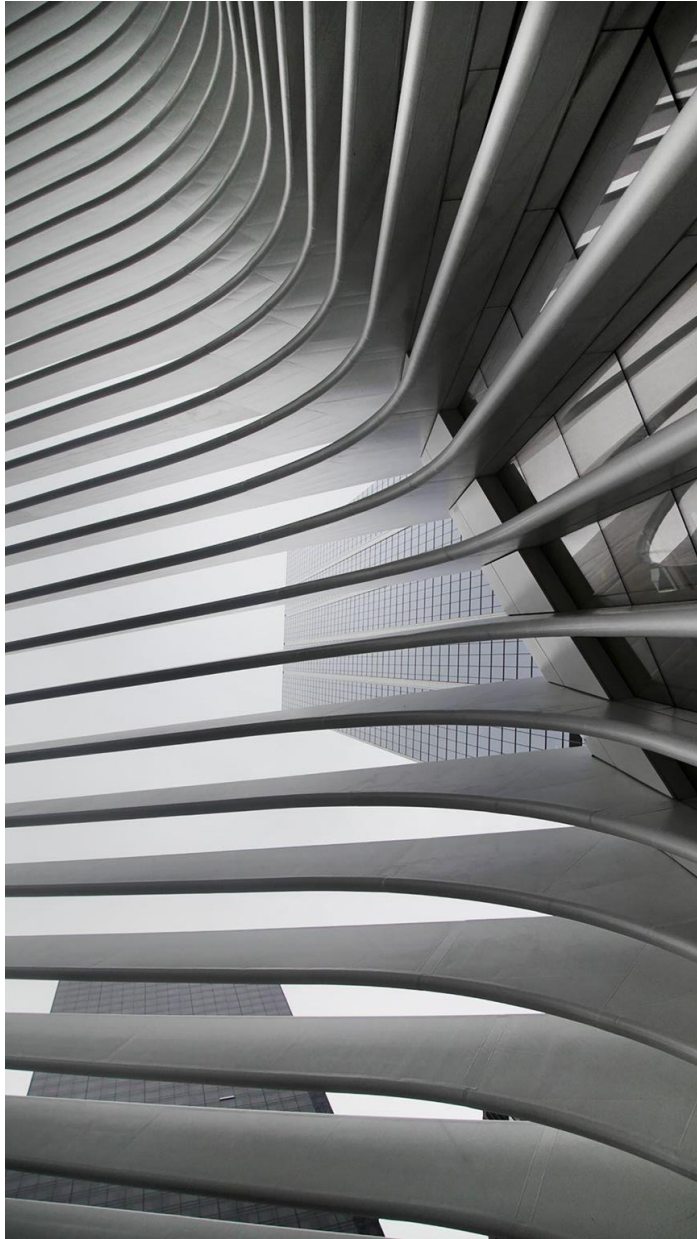


“Growth” Funds - Volatility vs Return



	Zurich Life Prisma 5	Aviva Fixed 80	Irish Life Multi Asset Portfolio 5	New Ireland iFunds 5 Alpha Gross	New Ireland Goodbody Dividend Income 6 Gross	Aviva Cantor Fitzgerald Multi Asset 70 Fund Series C
5 Year Volatility	14.0%	12.8%	10.7%	10.9%	14.8%	14.9%
5 Year Ann Performance	10.7%	9.8%	5.7%	9.2%	11.9%	9.4%



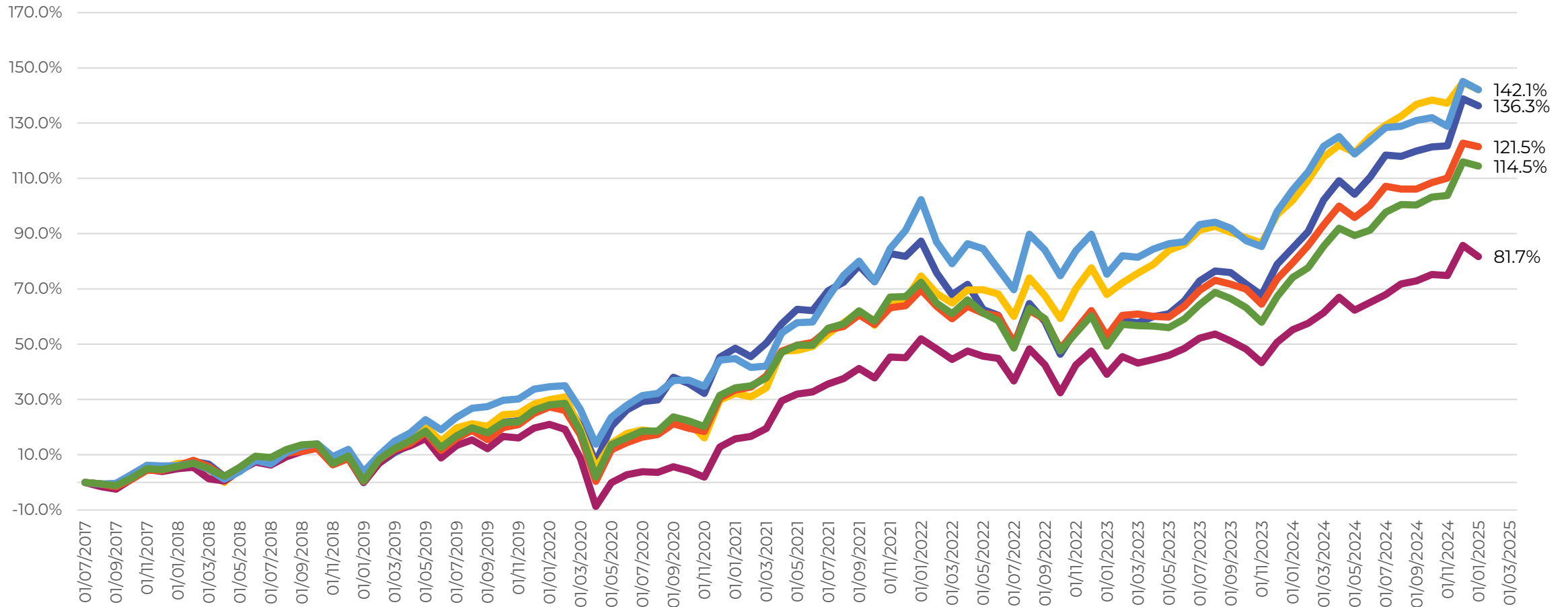


Equity Funds - High Growth Multi-Asset Fund Performance Dec 2024



Equity / High Growth Fund Cumulative Performance

- Zurich Life International Equity G
- Irish Life IL/Setanta Global Equity
- New Ireland Goodbody Dividend Income 6 Gross
- Aviva High Yield Equity Fund
- New Ireland iFunds Equities Gross
- New Ireland PRIME Equities Gross

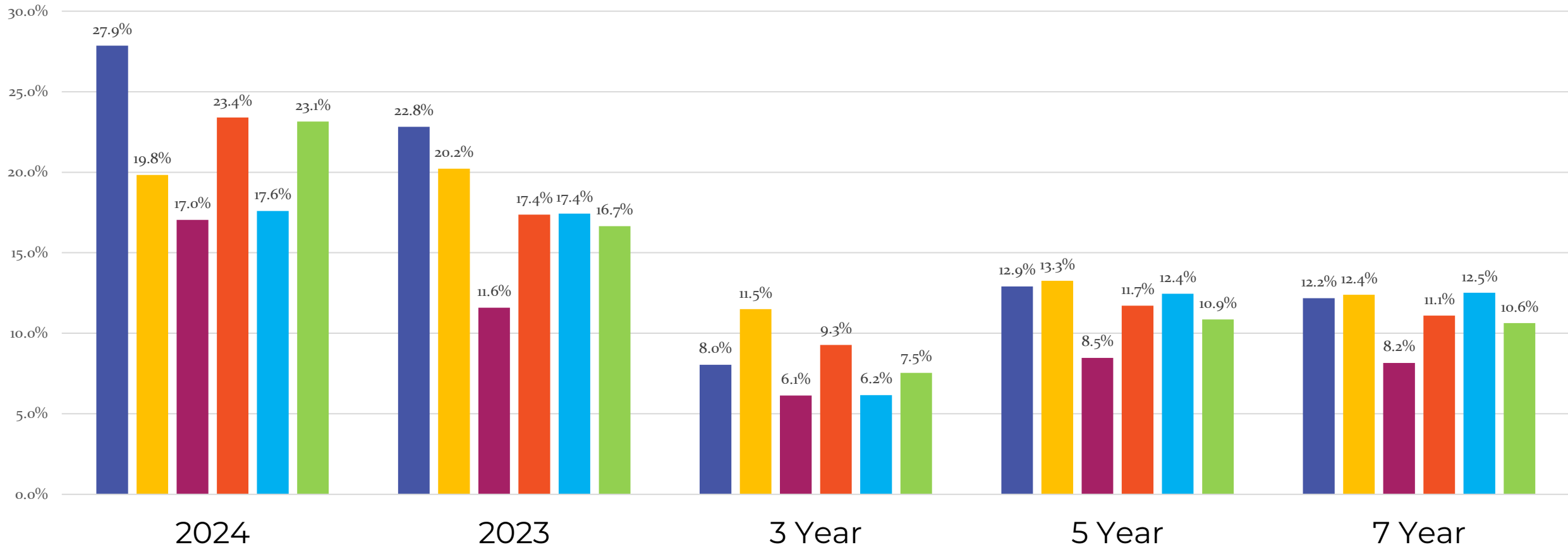


Source: Life-Office Monthly Prices . Performance is Gross of any fees. Performance from 1/7/17 – 1/1/25



Equity / High Growth Fund Annualised Performance

- Zurich Life International Equity G
- Irish Life IL/Setanta Global Equity
- New Ireland Goodbody Dividend Income 6 Gross
- Aviva High Yield Equity Fund
- New Ireland iFunds Equities Gross
- New Ireland PRIME Equities Gross

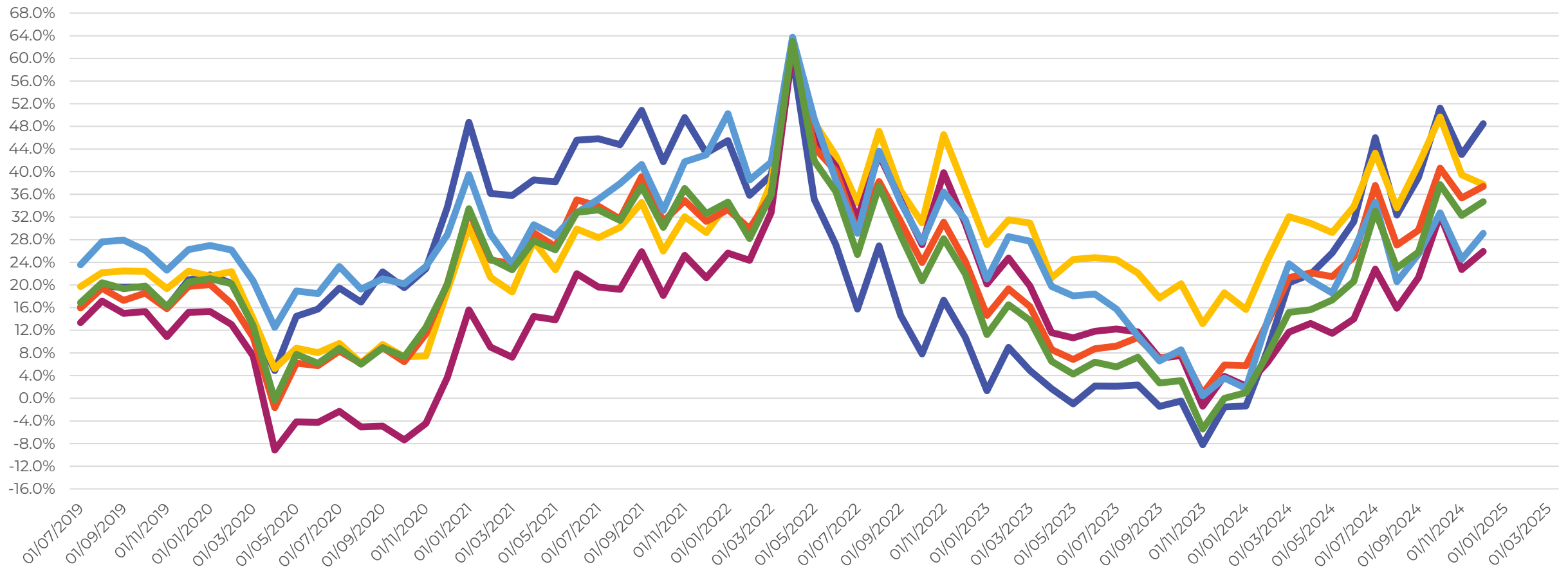


Source: Life-Office Monthly Prices . Performance is Gross of any fees. Performance from 1/7/17 – 1/1/25



Equity / High Growth Fund Rolling 2-Year Performance

- Zurich Life International Equity G
- Irish Life IL/Setanta Global Equity
- New Ireland Goodbody Dividend Income 6 Gross
- Aviva High Yield Equity Fund
- New Ireland iFunds Equities Gross
- New Ireland PRIME Equities Gross

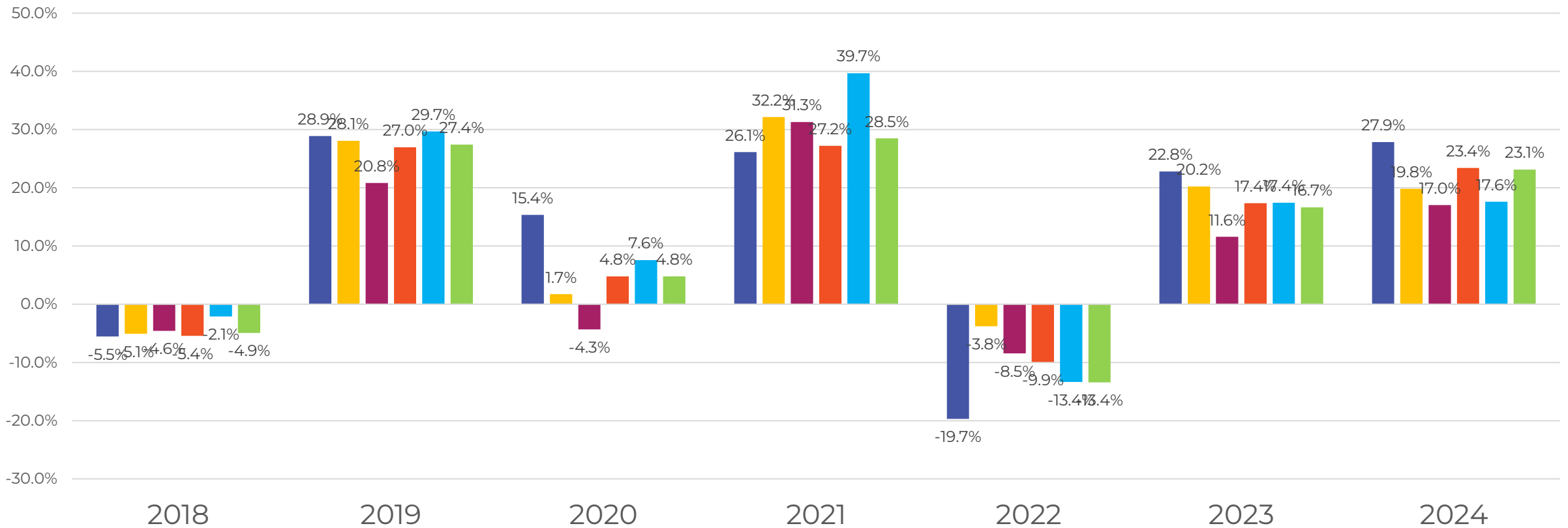


Source: Life-Office Monthly Prices . Performance is Gross of any fees. Performance from 1/7/17 – 1/1/25



Equity / High Growth Fund Yearly Performance

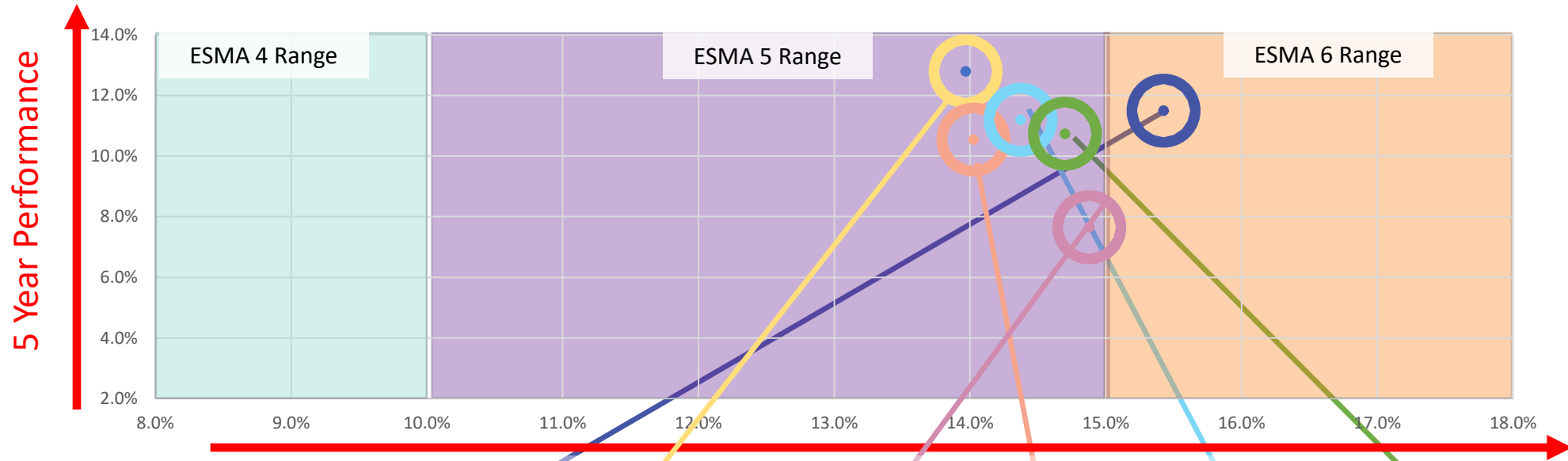
- Zurich Life International Equity G
- Irish Life IL/Setanta Global Equity
- New Ireland Goodbody Dividend Income 6 Gross
- Aviva High Yield Equity Fund
- New Ireland iFunds Equities Gross
- New Ireland PRIME Equities Gross



Source: Life-Office Monthly Prices . Performance is Gross of any fees. Performance from 1/7/17 – 1/1/25



Equity / High Growth – Fund Performance



	Zurich Life International Equity G	Aviva High Yield Equity Fund	Irish Life IL/Setanta Global Equity	New Ireland iFunds Equities Gross	New Ireland Goodbody Dividend Income 6 Gross	New Ireland PRIME Equities Gross
5 Year Volatility	15.7%	14.0%	14.9%	14.0%	14.4%	14.7%
5 Year Ann Performance	12.9%	13.3%	8.5%	11.7%	12.4%	11.8%

Source: Life-Office Monthly Prices . Performance is Gross of any fees. Performance from 1/7/17 – 1/1/25



THANK YOU



Kristian Bennett



kristian@kaben.ie



www.kaben.ie



087 386 5464



KABEN
ADVISORY